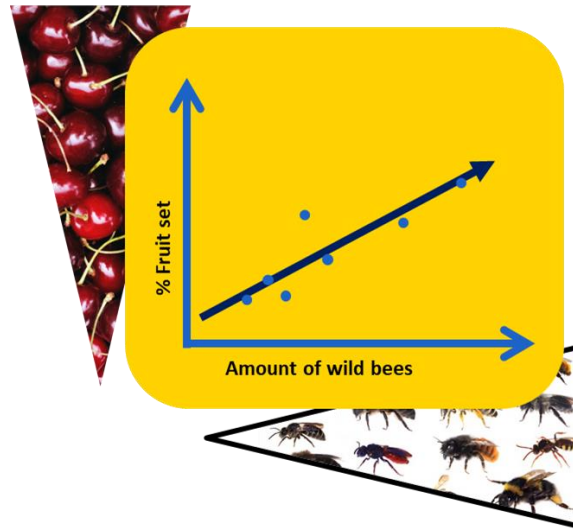


Wild bees the most efficient pollinator in fruit orchards

More wild bees = More sweet cherry



- (semi-)natural elements support wild bees in fruit orchards
- the herb layer in fruit orchards offers forage for wild bees
- nest opportunities and material need to be present in the environment.

Eeraerts, M., Meeus, I., Van Den Berge, S., & Smagghe, G. (2017). AEE <https://doi.org/10.1016/j.agee.2017.01.031>

Eeraerts, M., Smagghe, G., & Meeus, I. (2019). AEE <https://doi.org/10.1016/j.agee.2019.106586>

Tool 1: Pollination maps

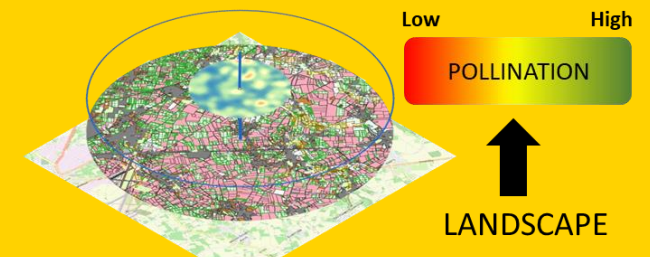
“A means for farmers to estimate pollination services of wild bees for their crop of interest”

Goal:

Modelling of pollination services in the EU North Sea Region.

How do we predict pollination services of wild bees

Land cover maps are translated into bee nesting and food maps to calculate the carrying capacity of the landscape for a wild bee with a certain nesting preference and foraging distance.



BEESPOKE

Tool 1: Pollination maps for agriculture

BEESPOKE is carried out in the framework of the Interreg North Sea Region Programme (www.northsearegion.eu) under the Programme Priority 3 "Sustainable North Sea Region" and the Specific Objective 3.2 "Develop new methods for the long-term sustainable management of North Sea ecosystems". The programme is funded by the European Regional Development Fund (ERDF) of the European Union.

CONTACT

Faculteit Bio-ingenieurswetenschappen

Vakgroep: Plant en Gewas

guy.smagghe@ugent.be

ivan.meeus@ugent.be

T +32 9 264 61 50 / +32 9 264 61 46

www.ugent.be

<https://northsearegion.eu/beespoke/>