

Pollinator identification guide and record sheet

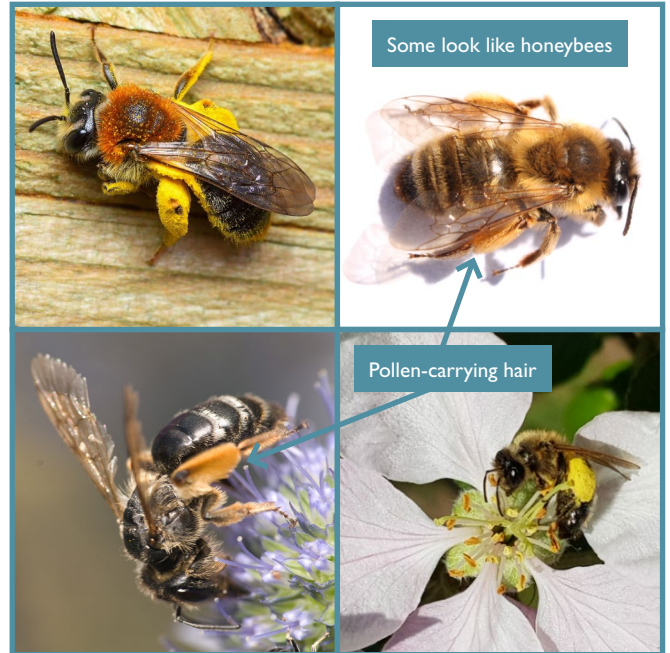


Interreg
North Sea Region
BEESPOKE
European Regional Development Fund



HONEY BEES

- Top area of abdomen is often flat
- Very broad last leg – 'pollen basket'
- Non-dense, short, hair on last legs
- Last legs are usually 'hang down' in flight
- Moistened spherical pollen on last legs
- Size ~ 18mm, and 'hairy' eyes



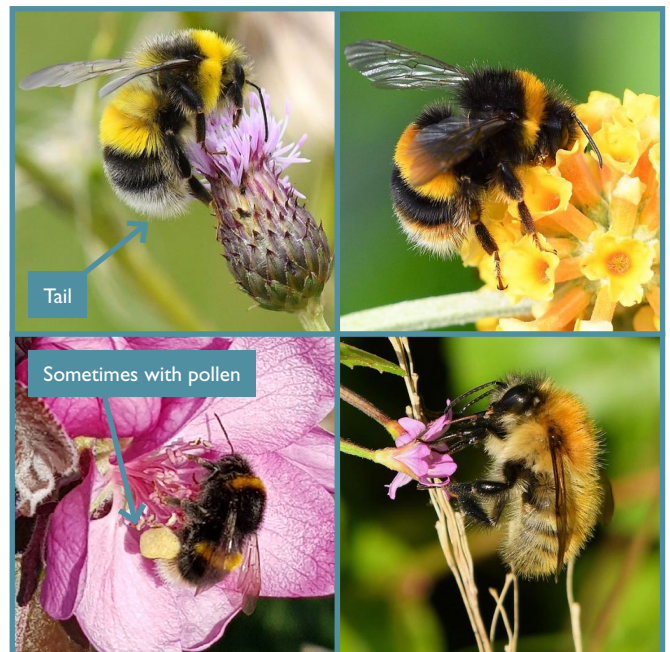
SOLITARY BEES

- Pollen-carrying hair; last legs or under abdomen
- Often hairy but less than bumblebees
- Subdued colours, less clear bands than bumblebees
- Lots of species and variable in colour and size
- Size ~ 18mm and smaller



HOVERFLIES

- Can be 'hovering' above flowers
- Only one pair of wings; usually held out at 40°
- Roundish head
- Round eyes covering most of the head area
- Short antenna compared to bees
- Not hairy



BUMBLEBEES

- More rounded body, very hairy / fluffy
- Usually, tail folds downwards when on flowers
- Moistened pollen on last legs
- Clear colour bands (not all species)
- Queens = 20-23mm / Workers = 11-17mm



BEESPOKE

Benefitting Ecosystems through Evaluation of food Supplies for Pollination to Open up Knowledge for End users

www.northsearegion.eu/beespoke @BeespokeNSR

Photographs 4, 6, 8, 15 and design by K. Tsiolis. Other photographs: B. Smith 1, 5, 13, 14, 16; M. Fountain 2; J. Breidenbach 9,10; P. Thompson 11; W. George 3, 7; D. Hodgkiss 12. Design/layout C. Stevens.



BEESPOKE

Benefitting Ecosystems through Evaluation of food Supplies for Pollination to Open up Knowledge for End users

Determine if your habitat improvements are having positive long-term impacts (years) on pollinator numbers and pollinator ‘types’ in your crops.

1. **15 minute survey** in crops of interest, each year, at peak flowering
2. Walk slowly through the centre of the crop, recording numbers of different pollinators on the crop flowers, using identification guide on the first page
3. This can be done by making a tally as you walk – see example
4. Aim to do this on a mild, sunny day for the time of year
5. Keep records to compare each year to measure habitat improvements for pollinators

Field/Plantation: EXAMPLE		Variety: DELICIOUS		Date: 01.03.2021	Time: 12:00
15 minute survey	HONEYBEE	SOLITARY BEE	BUMBLEBEE	HOVERFLY	OTHER
	III III III	IIII	III I	III II	IIII
	15	4	6	7	4

Field/Plantation:		Variety:		Date:	Time:
15 minute survey	HONEYBEE	SOLITARY BEE	BUMBLEBEE	HOVERFLY	OTHER

Field/Plantation:		Variety:		Date:	Time:
15 minute survey	HONEYBEE	SOLITARY BEE	BUMBLEBEE	HOVERFLY	OTHER

Field/Plantation:		Variety:		Date:	Time:
15 minute survey	HONEYBEE	SOLITARY BEE	BUMBLEBEE	HOVERFLY	OTHER